



关务通
Guan wu tong

Guan Wu Tong
Group

2023 Group Service Introduction

CONTENTS

1

Company Introduction

2

Business Introduction

3

Strategic Cooperation

4

Service Platform

5

Acknowledgment



Company Introduction



**Guan Wu Tong Stands For:
Caring—Pragmatic—Proficient;
also known as GWT Worldwide.**

CEO: Mr. Cuiping Wu

Personal Symbols:

Wise, innovative, steady and persistent

Company Purpose:

"Small victories rely on intelligence, big victories rely on virtue, innovation changes the pattern, development brings vitality, and sharing leads to success!"



➤ Company Profile



Company Background Introduction

Since 2004, GWT Worldwide has been committed to building an integrated enterprise service intelligent platform that combines agent customs declaration, bonded warehouses, global repairs, international freight forwarding, tax planning, export tax rebate, and supply chain finance. We effectively integrate information flow, logistics, and capital flow to provide customers with one-stop VIP services. Our platform allows customers to enjoy seamless integration between industries and to gain valuable insights from practical experience. We also tailor business models to meet the specific needs of each customer, leading them towards a successful future.

➤ Comapany Introduction



GWT Worldwide: We offer a comprehensive service platform that integrates agency customs clearance, bonded warehousing, global repairs, tax planning, export tax rebates, international freight forwarding, and supply chain financial services. Our intelligent platform provides comprehensive support to import and export enterprises.



Company's Certificate



会员证书

深报协证字第 00988 号

深圳市关务通国际物流有限公司：

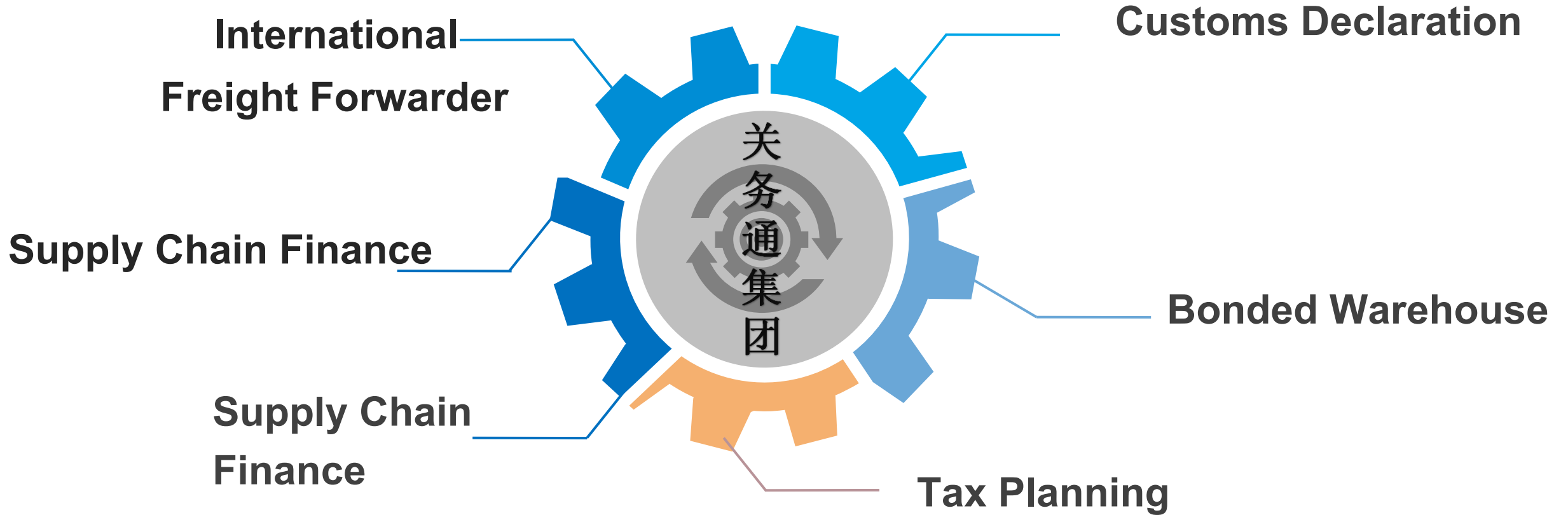
依据本会章程规定，经第四届理事会审核通过，接纳
贵公司为广东深圳报关协会副会长单位。

特颁此证。

广东深圳报关协会
二〇二一年六月



Integrated Intelligent Service Platform





Development History of GWT Worldwide

Tax planning services

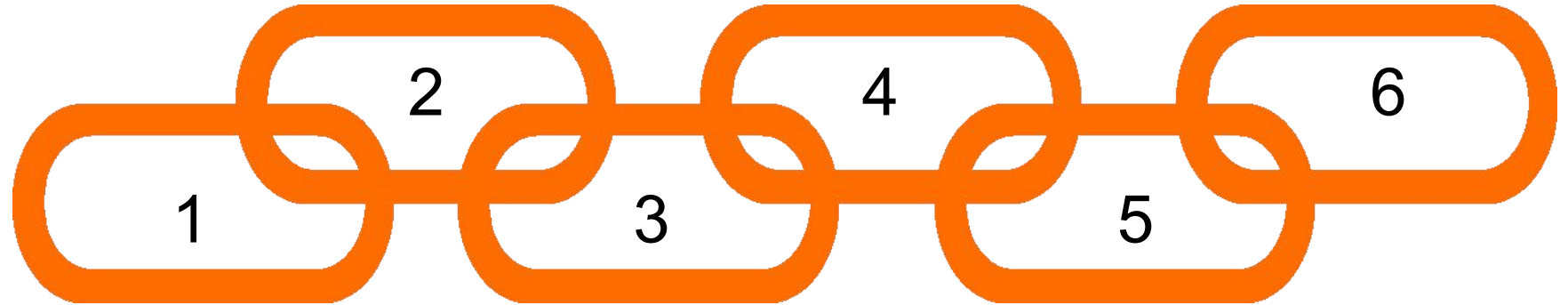
In July 2010, Shenzhen Guanwutong Investment Management Consulting Co., Ltd. was established to engage in various related business activities, such as policy interpretation, government subsidies, corporate investment, management planning, financial advisory, accounting agency, tax declaration, corporate registration, annual inspection, AEO certification consultation, etc.

International freight forwarding services

In September 2016, Shenzhen Guanwutong International Freight Forwarding Co., Ltd. was established as a professional freight forwarding agency that combines services such as booking, domestic and international transportation, customs declaration and inspection.

Hong Kong trade services

Guanwutong Group (Hong Kong) Limited was established in Hong Kong on August 27, 2019, utilizing the advantageous trade and logistics hub status of Hong Kong to provide high-quality services.



Customs clearance agency service

Shenzhen Guanwu Tong Customs Broker Co., Ltd. was established in June 2005. Our company specializes in various businesses such as processing trade, general trade, sea freight, road freight, air freight, and national customs clearance integration.

Bonded warehouse services

In July 2014, Shenzhen Guanwutong International Logistics Co., Ltd. was established.

The company provides services such as customs declaration, bonded warehousing, logistics distribution, global inspection, repair, consolidated shipment, one-day tour of bonded areas, and customs consultancy.

Supply chain financial services

In February 2017, Shenzhen Guanwutong Supply Chain Management Co., Ltd. was established to engage in related businesses such as supply chain finance, export tax rebates, tax payment advances, agent import trade financing, procurement execution, and distribution execution.



Company Culture

Mission

- To provide strong and full support for import and export enterprises

Vision

- To become the best intelligent platform for enterprise services Sense of Worth

Values

- Innovation
- Creation
- Sharing
- Win-Win Professionalism
- Integrity
- Efficiency and Safety



Business Unit—Customs Declaration

Shenzhen Guanwu Tong Customs Clearance Co., Ltd. was established on June 6, 2005. Our office is located on the 7th floor of Building 5A, Qidi XieXin Technology Park, Longgang District, Shenzhen City. We are a customs clearance company with an AEO advanced certification. Our annual customs clearance volume is 80,000 shipments, and we currently serve over 300 clients. Our entire customs clearance process is supported by a self-developed customs clearance system that seamlessly integrates with enterprise data, allowing for self-importation and reducing risks while enabling fast clearance.

证书编号 Certificate No.	775575635003	QG08
		
<h1>认证企业证书</h1> <h2>AEO CERTIFICATE</h2>		
认证企业名称 AEO Name	深圳关务通报关有限公司	
认证企业编号 AEO Code	AEOCN4403980229	
认证企业类型 AEO Type	高级认证企业	
认证日期 Date of Authorization	2021年08月02日	
发证机关 Issuing Authority	深圳海关	
发证日期 Date of Issue	2021年08月05日	



Agent Declaration – Service Introduction

Service content:

Customs Clearance Agency:

- Road
- • Sea Freight
- • Air Freight

Processing trade:

- Contract Filing, Changes, Verification, Factory Transfer, Monthly Report, Material Internal Sales, Surplus Material Transfer, Tax Reduction and Exemption Equipment, etc.
- **Customs affairs adviser**
- (Customs inspection docking)

Service category:

- **General trade**
- **Processing trade**
- **Tax exemption certificate**
- **Temporary permission for import and export goods**

➤ Agent Customs Declaration – Introduction of Ports and Partners

1. Highway ports: Huanggang port, Man jindu port, Sha Tau Kok port, Shenzhen Bay port, Liantang port;

2. Sea ports: Yantian Port, Shekou Port, Huizhou Port, Humen Port, Nansha Port;

3. Air freight business: airport cargo terminal airport logistics park, UPS, DHL, FEDEX, TNT and Guangzhou airport integration customs clearance, etc.

From the original Shenzhen agent customs declaration business development for the Pearl River Delta and even to the national.





Business Unit – Bonded Warehouse

Shenzhen Guanwutong International Logistics Co., Ltd. was established on July 16, 2014, with a registered capital of RMB 10 million. The office is located at Factory 101, No. 2 Lijing North Road, Export Processing Zone, Zhukeng Community, Longtian Street, Pingshan District, Shenzhen, and on the 5th floor of Building A-2, No. 3 Lijing North Road, 501.

Currently, the company serves over 200 clients, mainly storing goods such as LCD screens, electronic components, and other related items. The bonded warehouse in Pingshan covers an area of 23,000 square meters, and the ordinary warehouse covers an area of 12,000 square meters. The bonded warehouse in Qingxi, Dongguan covers an area of 5,000 square meters, and the bonded warehouse in Bengbu, Anhui covers an area of 5,000 square meters.



➤ Bonded Warehouse – Service Content

Service content:

- One day tour of bonded area
- Warehousing and distribution
- Bulk assembled
- Global inspection and maintenance



证书编号 398482336001
Certificate No. QG08



认证企业证书

AEO CERTIFICATE

认证企业名称 AEO Name	深圳市关务通国际物流有限公司
认证企业编号 AEO Code	AEOCN440356K00A
认证企业类型 AEO Type	高级认证企业
认证日期 Date of Authorization	2019年12月25日
发证机关 Issuing Authority	深圳海关
发证日期 Date of Issue	2019年12月30日

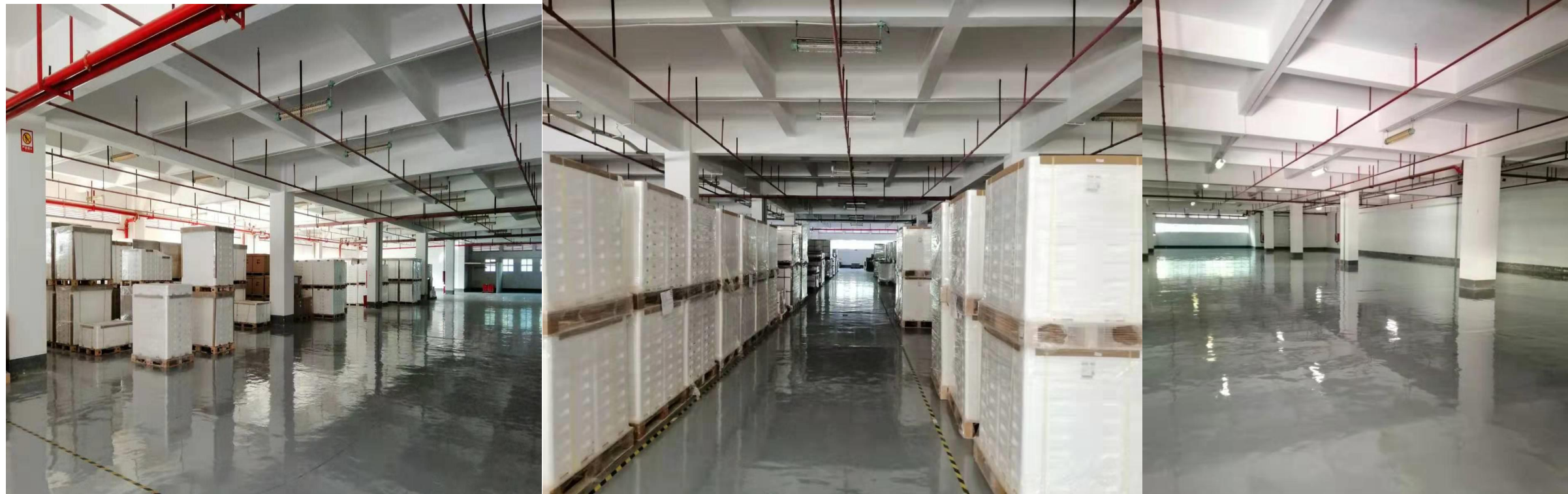
Storage Area 1



Storage Area 2



Storage Area 3



➤ Bonded Warehouse - One Day Tour of Bonded Area

The "One-Day Tour" service in the bonded zone utilizes the "entering the zone and leaving the tax" policy to solve the complex procedures and the non-refundable value-added tax for deep processing of processing trade by exporting first and then importing. The special functions and policy advantages of the processing zone not only save a lot of transportation costs for enterprises but also enhance the price competitiveness of their products. The development of the "One-Day Tour" service must rely on the approval of the customs-entered enterprises or overseas enterprises in the bonded zone, and all customs clearance, inspection, and logistics activities can be completed within the zone, regardless of import or export.



➤ Bonded Warehouse – Global Maintenance

In response to the upgrading plan for the Pingshan Comprehensive Bonded Zone by the State Council, the Shenzhen Municipal Government, and Shenzhen Customs, which aims to develop the zone into an "International Testing and Repair Center," the General Administration of Customs has also included bonded repair (bonded testing and repair) services as one of the "Ten Measures to Promote Economic Growth" issued during the financial crisis. Based on its own characteristics, Guanwutong International Logistics has responded to the national call and established the first 1000-square-meter bonded global repair workshop in the Pingshan Comprehensive Bonded Zone. The workshop and assembly line conform to various electronic product "testing and repair" requirements, and have been inspected and approved by relevant departments such as the Ministry of Industry and Information Technology and Customs. We are fortunate to be one of the few high-quality partners who can provide RMA solutions for domestic export enterprises.



Business Unit – Tax planning

Shenzhen Guanwu Tong Investment Management Consultant Co., Ltd. was established on July 15, 2010, with a registered capital of RMB 5 million. The office is located on the 7th floor of Building 5A, Qidi Xiexin Technology Park, Dayun Center, Longgang District, Shenzhen.

Currently, there are over 150 clients, with an annual tax refund amount of approximately RMB 200 million, and about 300+ financial training sessions per year, as well as providing AEO certification consulting services.





➤ Tax Planning - Service Introduction

Service Content:

Export tax rebate (technical services)

Financial processing (bookkeeping, annual audit, enterprise audit)

Financial auditing

➤ Tax Planning – Export Tax Rebate

Guangwu Tong Investment Management Consulting Company is the only customs consulting company for processing trade enterprises in Longgang District. With a professional team, we have been providing export tax rebate services for eleven years, with a professional export tax rebate team, rich experience in tax rebates, and high-quality service level, ensuring that every export tax rebate can be returned to your account safely and timely. Since the establishment of the company, we have mainly engaged in investment consulting, customs consulting, tax consulting, incoming material transformation, international trade and other businesses. The team members have rich experience in the transformation of "three transformations and one supplement", are good at operating processes for all export supervision methods for tax rebates, and can accurately and efficiently complete tax rebate business in the shortest time possible. We are proficient in tax policies and can quickly grasp relevant tax consulting information to provide customers with services and forward-looking guidance.

Service types:

Tax-free export for production-oriented enterprises

Export tax rebate for foreign trade-oriented enterprises.



Business Unit – Supply Chain Finance

Main business: import and export trade, export tax rebate, on behalf of funds and other related business.

Shenzhen Guanwutong Supply Chain Management Co., Ltd. was established on February 8, 2017, with a registered capital of 25 million RMB. The import and export trade volume is approximately 300 million RMB per year.

Guanwutong Supply Chain utilizes modern supply chain management techniques, integrates the company's logistics and financial resources, and integrates information flow, logistics, and capital flow to build a comprehensive and multi-project integrated enterprise service intelligent platform.





关务通
Guanwu Tong



Business Unit - International freight forwarding

Shenzhen Guanwu Tong International Freight Forwarding Co., Ltd. was established on September 6th, 2016, with an office located on the 7th floor, Building 5A, Qidi XieXin Technology Park, Longgang, Shenzhen. The registered capital is RMB 2 million.

The main business includes:

- Sea and air freight booking
- FBA first mile transportation
- LCL warehousing
- China-Europe train service

Terminal transportation and domestic feeder service.





Sea Freight

Services We Offer

- Container Trucking Service
- Professional Sales Team
- Full Transport Tracking

We Are An NVOCC Provider:

Our services include the issuance of Bills of Lading (B/L) and Waybills, arranging for integrated transportation, developing and implementing shipping plans based on shipper orders, booking space, providing customs clearance, inspection, tally, storage, and distribution services.



Air Freight

Services We Offer

- Providing air, sea, and land multi-modal transportation/DDU, DDP services.
- Providing import and export customs clearance, transit, commercial inspection, quarantine, animal and plant inspection, reporting procedures, airport and ground operations, as well as air and land transportation supervision services.
- Providing charter, live, hanging, special, and bonded goods transportation services.
- Providing related packaging, warehousing, and distribution services.
- Acting as an agent for air transportation insurance.
- Providing real-time information tracking and feedback services for air cargo.



Rail Freight

Services We Offer

- DDP (Delivery Duty Paid), DDU (Delivery Duty Unpaid)
- Hazardous、break-bulk& over-sized cargo
- Consolidation, warehousing and packing / unpacking services
- Documentation preparation
- Customs clearance
- Inland transportation arrangement
- Cargo insurance



Why Choose Us ?

GWT Worldwide-Your Most Trusted Freight Forwarding Expert

01



24x7

24/7 Service

GWT Worldwide offer round-the-clock service and operate continuously every day of the year. Our services are available 24/7 ensuring that you receive timely assistance whenever you need it.

02



30000

One-stop Logistic Service Platform

As a globally certified Authorized Economic Operator (AEO) company GWT Worldwide one-stop logistic service platform offers space booking for 600 ports worldwide. Our operations in China include a 30000 square meter (323 000 square feet) bonded warehouse and a customs clearance team with over 18 years of practical experience.

03



Delivery

Safe and On-time Delivery

GWT Worldwide possess a robust network and logistical capabilities in major ports and airports enabling us to provide a dependable and efficient transportation service for goods originating from any city in China to destinations worldwide. You can have peace of mind knowing that our team of specialists will handle your shipments with utmost care and ensure timely delivery.

Members of Guan Wu Tong Group



Business Partners